

The SCU Kokusai Koryu Kaikan

Your home away from home in Shimonoseki



Shimonoseki City University offers self-catering dormitory accommodation for study abroad students. The SCU Kokusai Koryu Kaikan is a 4 story building, featuring 18 rooms located on the 2nd, 3rd and 4th floors. The 1st floor features a common space which is also used for international exchange events.

The dormitory is a convenient 10 minute walk from the university. It is a 5 minute walk from the closest bus stop (Miyanoshita) and 20 minutes to the closest JR train station (Hatabu). The Yume Mall is in walking distance, as are several supermarkets, convenience stores, eateries, and other facilities (banks, post office, doctor surgeries, etc).

All rooms are fully furnished, including all necessary electronic appliances. Internet connections can be arranged.

Rent depends on room type:

Type A: 1 bedroom + dining room (approx 35 m²), own bathroom & toilet: 28,000 yen/month

Type B: 1 bedroom + dining room (approx 30 m²), own bathroom & toilet: 28,000 yen/month

Type C: 1 bedroom (approx 22 m²), own shower room & toilet: 18,000 yen/month



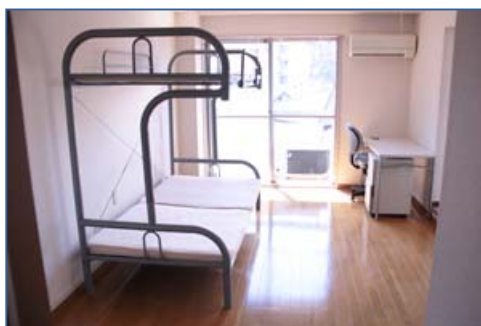
32-21 Takara-machi,
Shimonoseki, Yamaguchi, 751-0822

〒751-0822
山口県下関市宝町 32 番 21 号

Type A



Type B



Type C

